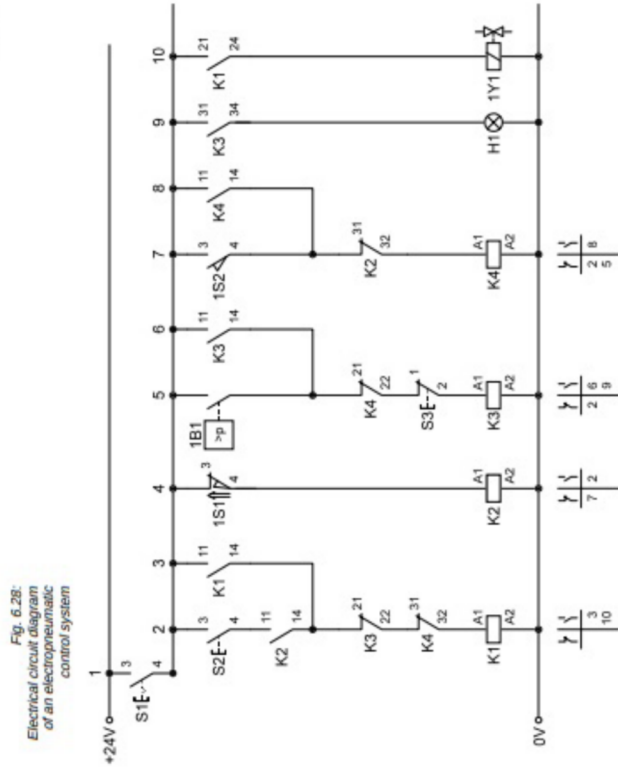
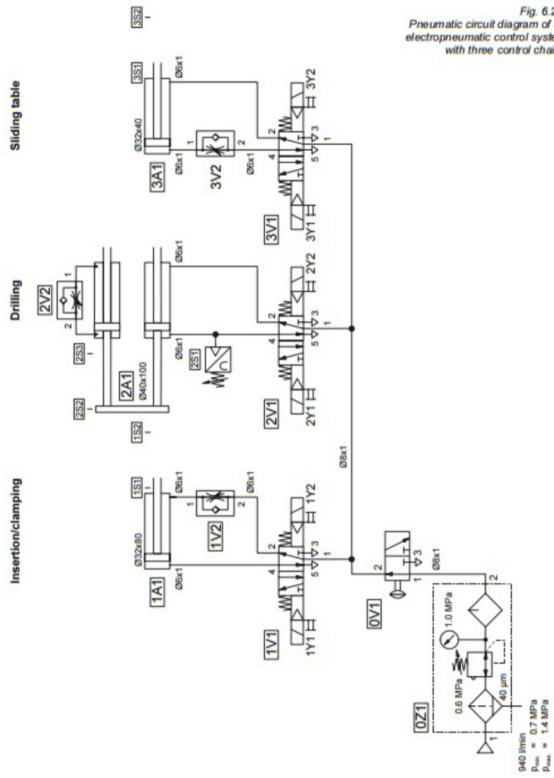
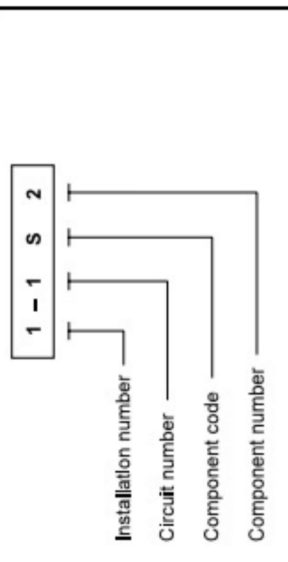


PEMBERIAN LABEL KOMPONEN



S1 = Main switch
 S2 = Start switch
 S3 = Acknowledgement switch
 1S1/1S2 = Limit switch
 1B1 = Pressure switch

Fig. 6.21: Identification code for components in pneumatic circuit diagrams



Components	Identification
Compressors	P
Power components	A
Drive motors	M
Sensors	S
Valves	V
Valve coils	Y*
Other components	Z**

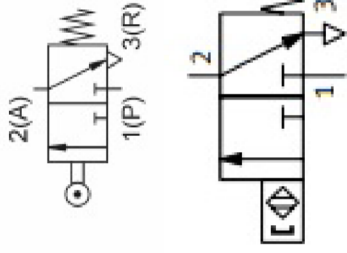
* national supplement in German standard
 ** or any other letter not included in the list

Component type	Identification
Limit switch	S
Manually operated pushbutton, input elements	S
Reed switch	B
Electronic proximity switch	B
Pressure switch	B
Indicator	H
Relay	K
Contactors	K
Solenoid coil of a valve	Y

Table 6.4: Designation of components in an electrical circuit diagram (DIN 40719, Part 2)

INPUT ELEMENT 2

3/2-way roller lever valve,
normally closed



3/2-way roller lever valve with idle
return, normally closed

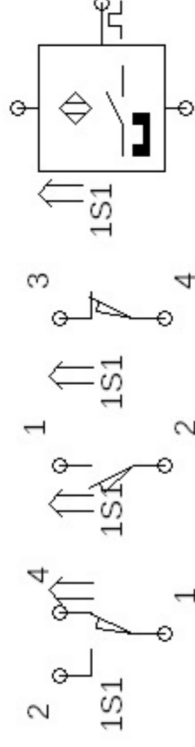
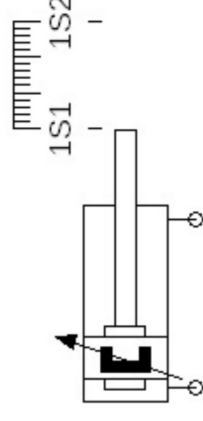
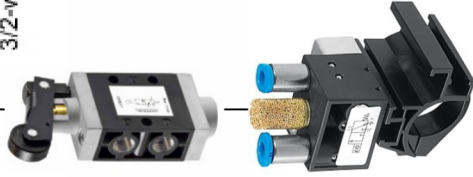
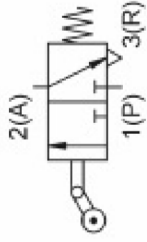
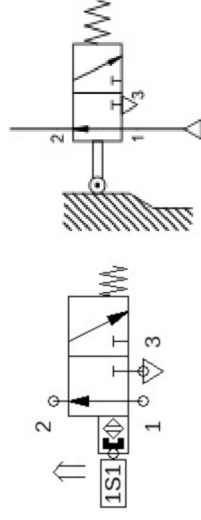
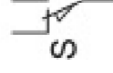


Fig. 4.6
Actuated initial position



Limit switch, electrical,
Actuation from left or right*



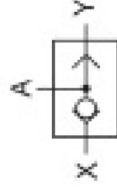
Pneumatic

Electropneumatic

PROCESSING ELEMENT 3

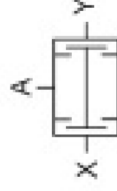
OR

Shuttle valve



AND

Dual-pressure valve



Grafik Pergerakan Pneumatic 2

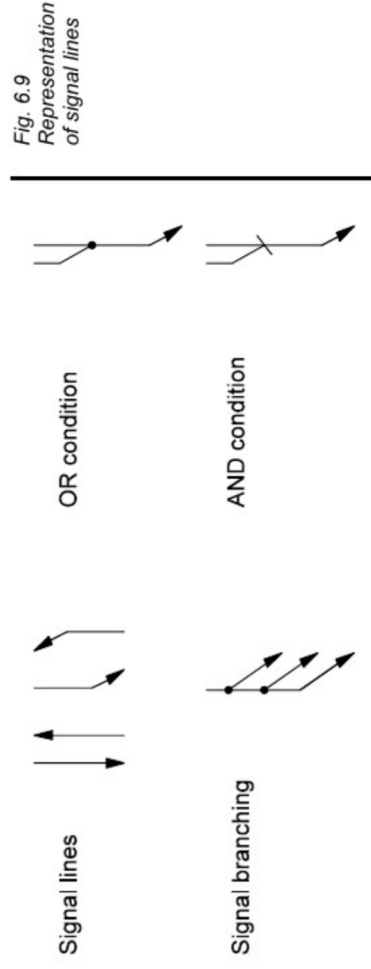
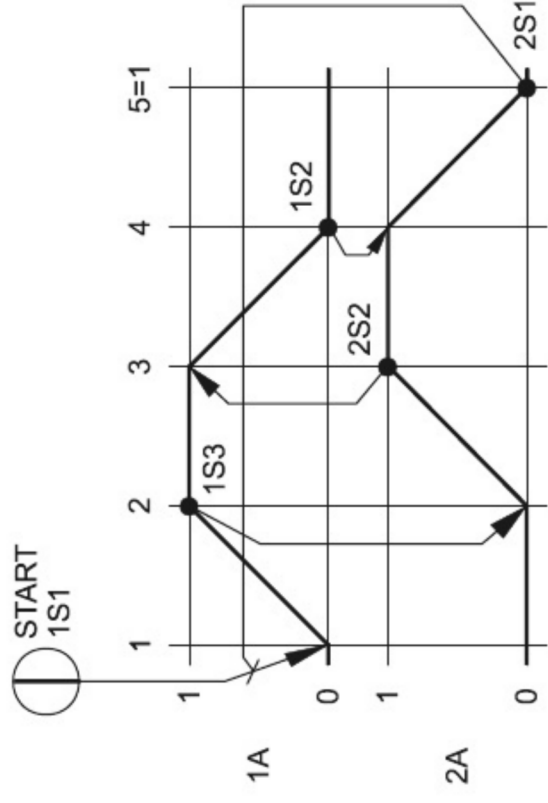
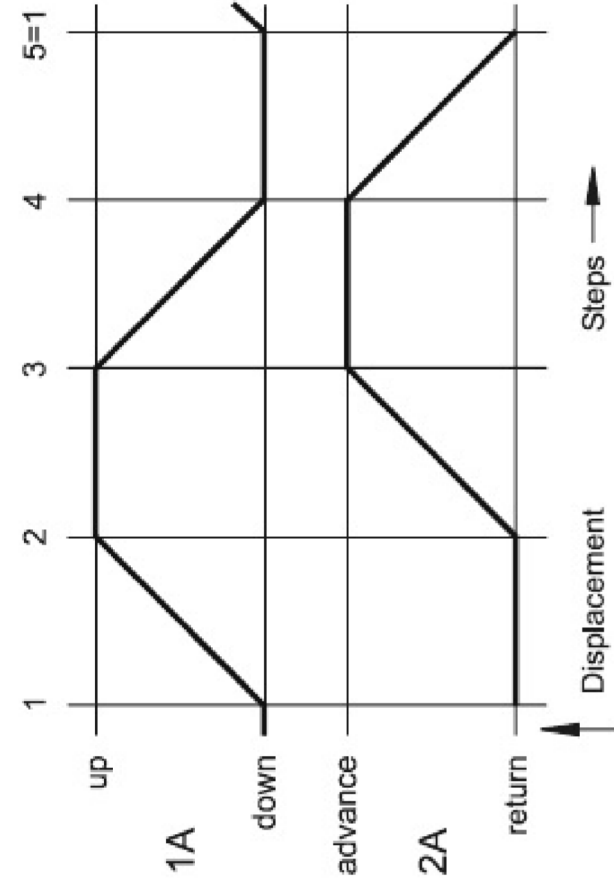


Fig. 6.9
Representation
of signal lines

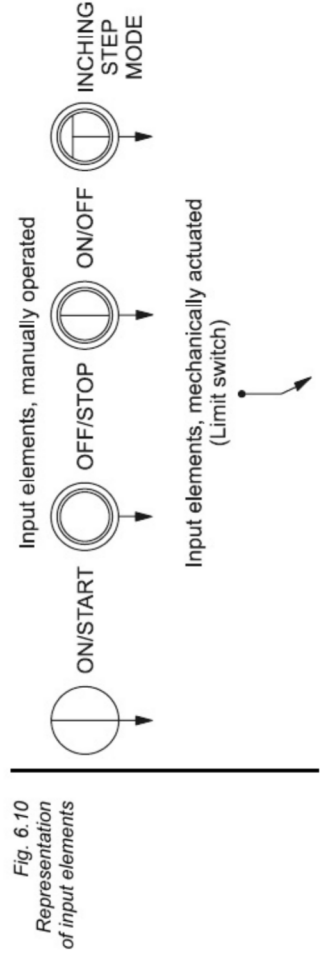
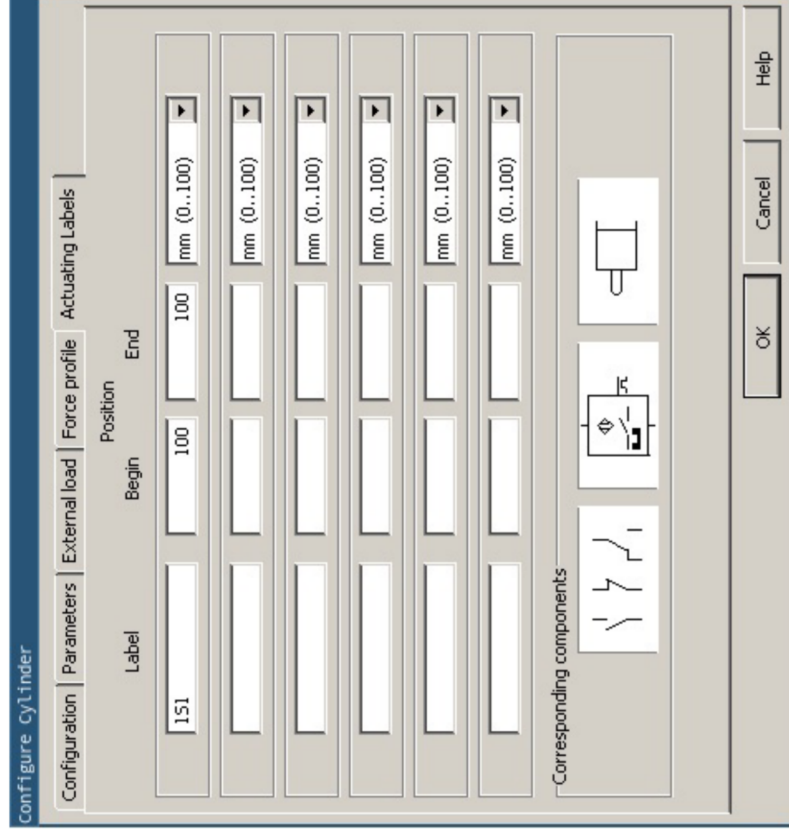


Fig. 6.10
Representation
of input elements

Cara memberikan label limit



PRAKTIKUM 2